

# Chinthaka Wickramage House Nugegoda





## Architect's Own House



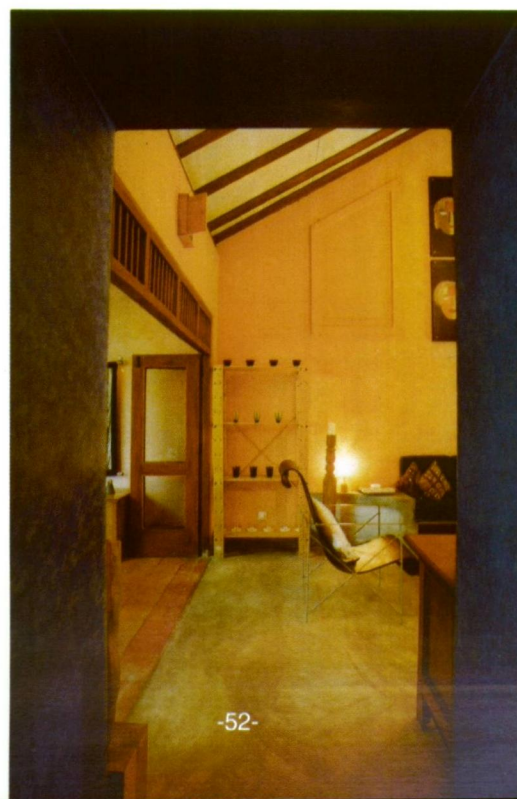
As an extension to the old family house Archt.Chinthaka Wickramage builds a niche for himself with a cool blue exterior and warm terracotta hued interior

Located in the quiet green suburb of Nugegoda, a bright blue painted house nestles amongst other suburban houses. The blueness of the exterior immediately attracts the eye. It is an extension to the old family residence and continuous as a part of the old house with its pitched tile roof blending with it.



The lounge extends from the entrance verandah to the rear garden and beyond with large windows framing a landscaped garden.. The architect had taken great effort to retain some old trees which gives shade and coolness to the vibrant interior.. The lounge is a double height space and the cool of the blue exterior gives way to the warm terracotta hues, a touch of yellow local tiles and titanium cement rendered floors, that make up the warm rustic interior

The use of blue black furnishings highlights the mood of the house. A central three tier paper lantern illuminating it gently at night .





Cross section through Front Verandah

The dining room located on the side of the lounge opens to the garden as well. Equipped with a wooden table and canvas chairs the room exudes casualness in a relaxed atmosphere. The stairs are located in this space and leads to upper floor.

The upper level has a lounge with TV workspace etc. and a master bedroom which overlooks the tree canopy on both sides. The bedroom has its own balcony and toilet, and is well ventilated with windows at both ends of the room.

The architects work space is secluded from the living spaces below and will not be disturbed by guests and family relaxing in the living/dining area.

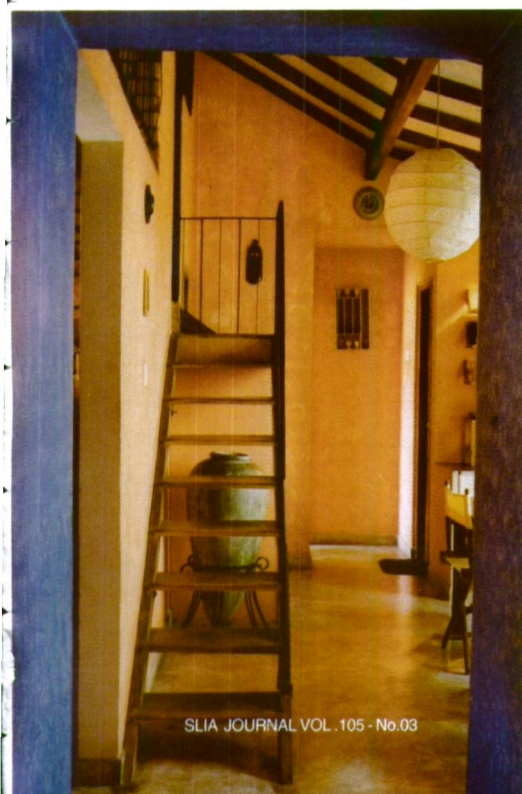
The ground floor has the kitchen located next to the dining room. The kitchen opens into a smaller courtyard which functions as a light well and allows for cross currents of air movement

The ground floor has two bed room overlooking the garden, for family and guests.

Wickramag house is small but made spacious in volume with a double height roof and large windows communicating with the exterior. The walls in cool earth colours emphasized by a white ceiling enhances the intimacy of this architect designed power home. The timber windows wooden tables, cement benches complement the simplicity of the interior, highlighting the rusticity of the place.

Throughout the house are scattered rough, cement benches, which with a bright cotton cushions a place to relax in comfort, privacy and simplicity ●

Photo credit : Varuna Gomis







*through a painter's eye*