

NA-312

ISSN 1391 - 5010

**MAB Checklist and Hand Book Series**

**Publication No. 23**



***AN UPDATED CHECKLIST  
OF BEES OF SRI LANKA  
WITH NEW RECORDS***

**W.A.INOKA P. KARUNARATNE, JAYANTHI P. EDIRISINGHE  
& ALAIN PAULY**



**National Science Foundation  
Sri Lanka**

NA-312

**AN UPDATED CHECKLIST  
OF BEES OF SRI LANKA  
WITH NEW RECORDS**



**W. A. INOKA P. KARUNARATNE, JAYANTHI P. EDIRISINGHE  
& <sup>1</sup>ALAIN PAULY**

Department of Zoology, Faculty of Science, University of Peradeniya, Sri Lanka

<sup>1</sup>Department Entomologie, Institut royal des Sciences naturelles de Belgique, Rue Vautier  
29, 1000 Bruxelles, Belgium.

**National Science Foundation  
47/5, Maitland Place  
Colombo 07  
SRI LANKA**

**First Published 2005**

**National Science Foundation  
47/5, Maitland Place, Colombo 07, Sri Lanka (2005)**

**All rights Reserved**

No part of this publication may be produced, stored in a retrieval system, or transmitted in any form or by any means, electronic, mechanical, photocopying, recording or otherwise without the prior permission of the Publisher.

ISSN 1391-5010

ISBN 955-590-040-X

*Printed by*

**National Science Foundation of Sri Lanka**

**47/5, Maitland Place**

**Colombo 07**

**SRI LANKA**

**Tel: 94-1-696771-3 Fax: 94-1-691691, 94-1-694754**

**E-mail: [info@nsf.ac.lk](mailto:info@nsf.ac.lk)**

## **FOREWORD**

The National Man and the Biosphere (MAB) Committee is the National focal point for UNESCO's Man and the Biosphere Programme. One of the activities of the MAB National Committee is collection and publication of the information related to biodiversity conservation, sustainable development and capacity building for the benefit of the nation. Hence, the text titled "An Updated Checklist of Bees of Sri Lanka with New Records" is the 23<sup>rd</sup> publication in the series.

Bees are of inestimable value as agents of cross-pollination and many plants are entirely dependent on particular kinds of bees for their reproduction. This text contains data on almost all the identified bee species arranged alphabetically by family, subfamily, genus and species.

I trust this publication would serve as a valuable reference guide to the scientists and others who are interested in this field. The NSF would welcome any additions, corrections and suggestions for improvement.

I acknowledge with gratitude the services of the National Committee on Man and the Biosphere and efforts of Ms Anusha Amarasinghe (Director-Scientific Affairs, Head/ILD, NSF) towards making this publication a reality.

Prof. Sirimali Fernando  
Chairperson  
National Science Foundation

December 2005

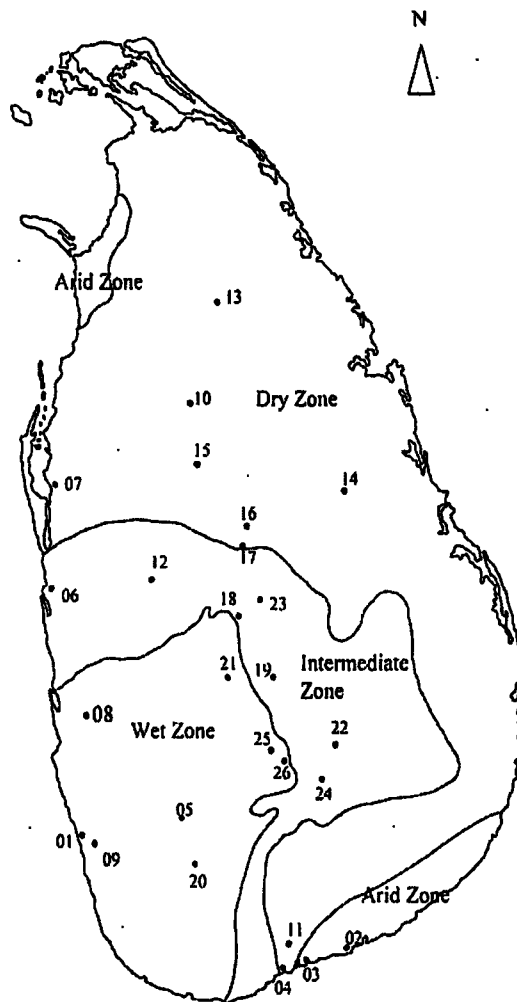
## ABSTRACT

The updated checklist of bees of Sri Lanka is based on field collections made in 29 locations covering all the biogeographic regions in the island. The study resulted in the addition of 16 species and 5 genera of bees to the previous checklist resulting in a total bee fauna of 148 species in 38 genera and four families for Sri Lanka. A species of bees new to Science and a new genus of bees to Sri Lanka are reported. *Gnathonomia* Pauly n. gen. is included following the updating of the previously known genus *Nomia*. *Gnathonomia* in Sri Lanka is represented by two species. A description of the new species of bees *Lipotriches edirisinghei* Pauly n. sp. is included with a list of paratypes lodged in the Museum of the Department of Zoology, University of Peradeniya. Genus *Lipotriches* now includes 9 species in Sri Lanka. The new species of bees visit largely graminaceous flowers, especially in the early hours of the morning.

## INTRODUCTION

Bees (Hymenoptera: Apoidea) undoubtedly are the most useful group of insects, being pollinators. There are over 16,000 described species of bees in the world with their highest diversity in temperate, xeric regions of the world (Michener, 2000). The very first checklist of bees of Sri Lanka (Wijsekara, 2001) puts together published details of 132 bee species collected during the British Colonial Period and thereafter by the Smithsonian – Sri Lanka Insect Survey. Four other species of bees from these collections have not been listed. A recent field study conducted by local scientists led to the identification of 16 bee species in five genera, previously unrecorded from Sri Lanka, including a species new to Science (Karunaratne, 2004).

The updated checklist includes 148 species of bees in 38 genera and four families, arranged according to the Family classification of Michener (2000). The checklist is arranged alphabetically by Family, Subfamily, Genus and Species. The source and the location in the country of the expert identified voucher specimens of the listed bee species are designated as *KVK-ZMP* (Karl V. Krombein collection in the Zoology Museum, Peradeniya), *KVK-NMC* (Karl V. Krombein collection in the National Museum, Colombo), *IK-ZMP* (first author's collection lodged in the Zoology Museum, Peradeniya) and *BMNH* (British Museum of Natural History). Distribution localities of species collected during the field study are given in Fig.1:



Collecting sites are numbered in order of increasing altitude: 1=Kalutara, 2=Hambanthota, 3=Rekawa, 4=Ussangoda, 5=Ratnapura, 6=Chillaw, 7=Puttalam, 8=Gampaha, 9=Bombuwala, 10=Anuradhapura, 11=Angunakolapelessa, 12=Wariyapola, 13=Vavuniya, 14=Giritale, 15=Mahailuppallama, 16=Dambulla, 17=Gallewela, 18=Matale, 19=Randenigala, 20=Sinharaja, 21=Peradeniya (includes 4 sites: Gannoruwa Ag. Field, Meewatura Ag. Field, R. Bot. Gardens & Univ. Park), 22=Badulla, 23=Knuckles, 24=Bandarawella, 25=Nuwara Eliya, 26=Sita Eliya.

Figure 1. Map of Sri Lanka showing the bee collection sites distributed in different agroecological regions of the country.

## Abbreviations for collection sites of bees

ANG	Angunakolapelessa (6.10 <sup>0</sup> N 80.54 <sup>0</sup> E)	MAT	Matale (7.47 <sup>0</sup> N 80.62 <sup>0</sup> E)
ANU	Anuradhapura (8.32 <sup>0</sup> N 80.41 <sup>0</sup> E)	MIP	Mahailupallama (8.06 <sup>0</sup> N 80.27 <sup>0</sup> E)
BAD	Badulla (6.99 <sup>0</sup> N 81.05 <sup>0</sup> E)	NUE	Nuwara Eliya (6.58 <sup>0</sup> N 80.46 <sup>0</sup> E)
BAÑ	Bandarawela (6.50 <sup>0</sup> N 80.59 <sup>0</sup> E)	PER	Peradeniya (7.29 <sup>0</sup> N 80.63 <sup>0</sup> E)
BOM	Bombuwela (6.35 <sup>0</sup> N 80.01 <sup>0</sup> E)	PUT	Puttalam (8.04 <sup>0</sup> N 79.82 <sup>0</sup> E)
CHL	Chillaw (7.34 <sup>0</sup> N 79.47 <sup>0</sup> E)	RAN	Randenigala (7.18 <sup>0</sup> N 80.86 <sup>0</sup> E)
DAM	Dambulla (7.85 <sup>0</sup> N 80.65 <sup>0</sup> E)	RAT	Ratnapura (6.70 <sup>0</sup> N 80.38 <sup>0</sup> E)
GAL	Gallewela (7.45 <sup>0</sup> N 80.34 <sup>0</sup> E)	REK	Rekawa (6.03 <sup>0</sup> N 80.51 <sup>0</sup> E)
GAM	Gampaha (6.59 <sup>0</sup> N 80.56 <sup>0</sup> E)	SIG	Singharaja (6.23 <sup>0</sup> N 80.25 <sup>0</sup> E)
GTL	Giritale (7.59 <sup>0</sup> N 80.56 <sup>0</sup> E)	STE	Sita Eliya (6.56 <sup>0</sup> N 80.48 <sup>0</sup> E)
HAM	Hambantota (6.07 <sup>0</sup> N 81.07 <sup>0</sup> E)	USG	Ussangoda (6.46 <sup>0</sup> N 80.23 <sup>0</sup> E)
KAL	Kalutara (6.59 <sup>0</sup> N 79.96 <sup>0</sup> E)	VAV	Vavunia (8.45 <sup>0</sup> N 80.30 <sup>0</sup> E)
KNU	Knuckles (7.24 <sup>0</sup> N 80.48 <sup>0</sup> E)	WRP	Wariyapola (7.25 <sup>0</sup> N 80.21 <sup>0</sup> E)

# SYSTEMATIC LIST OF BEE GENERA AND SPECIES

## FAMILY – COLLETIDAE

### SUBFAMILY - HYLAEINAE

#### 1. *HYLAEUS* Fabricius, 1793

##### 1. *Hylaeus krombeini* Snelling, 1980

Source: Snelling 1980; Wijesekara, 2001; *KVK-NMC*

##### 2. *Hylaeus sedens* Snelling, 1980

Source: Wijesekara, 2001; Krombein & Norden 2001

## FAMILY - HALICTIDAE

### SUBFAMILY - HALICTINAE

#### 2. *HALICTUS* Latreille, 1804

##### 3. *Halictus (Seladonia) lucidipennis* Smith, 1853

Source: Gupta 2003; Wijesekara 2001; *KVK-NMC, KVK-ZMP, IK-ZMP*

New localities: ANU, PUT, CHL, PER, DAM, WRP, KNU, ANG, USG

#### 3. *HOMALICTUS* Cockerell, 1919

##### 4. *Homalictus singhalensis* (Blüthgen, 1926)

Source: Wijesekara 2001; *KVK-NMC, KVK-ZMP, IK-ZMP*

New localities: NUE, STE

##### 5. *Homalictus paradnanus* (Strand, 1914)

Source: *KVK-NMC*

4. *LASIOGLOSSUM* Curtis, 1833

6. *Lasioglossum (Ctenonomia) amblypygus* (Strand, 1913)  
Source: Wijesekara 2001; *KVK-NMC, KVK-ZMP, IK-ZMP*  
New localities: ANU, WRP, KNU, ANG, USG, GTL
7. *Lasioglossum (Ctenonomia) cire* (Cameron, 1897)  
Source: Wijesekara 2001; *KVK-NMC, KVK-ZMP, IK-ZMP*  
New localities: KAL, BOM
8. *Lasioglossum (Ctenonomia) clarum* (Nurse, 1902)  
Source: Wijesekara 2001; *KVK-NMC, KVK-ZMP*
9. *Lasioglossum (Ctenonomia) semisculptum* (Cockerell, 1911)  
Source: Wijesekara 2001
10. *Lasioglossum (Ctenonomia) vagans* (Smith, 1857)  
Source: Wijesekara 2001; *KVK-ZMP, IK-ZMP*  
New localities: PER
11. *Lasioglossum (Evyllaesus) carinifrons* (Cameron, 1904)  
Voucher specimen deposited in the NMC and DMP. determined by Sakagami 1992  
Source: Wijesekara 2001; *KVK-NMC, KVK-ZMP, IK-ZMP*  
New localities: NUE, STE, KNU, BAD
12. *Lasioglossum (Nesohalictus) halictoides* (Smith, 1859)  
Source: Wijesekara 2001; *IK-ZMP*  
New localities: PUT, CHL, HAM, REK
13. *Lasioglossum (Nesohalictus) serenum* (Cameron, 1897)  
Source: Wijesekara 2001; *KVK-NMC, IK-ZMP*  
New localities: PER, CHL

14. *Lasioglossum (Sudila) alphenum* (Cameron, 1897)

Source: Wijesekara 2001; *KVK-NMC, KVK-ZMP, IK-ZMP*

New localities: NUE, STE, KNU, BAD

15. *Lasioglossum (Sudila) aulacophorum* (Strand, 1913)

Source: Wijesekara 2001; *KVK-NMC, KVK-ZMP, IK-ZMP*

New localities: STE, KNU, BAD

16. *Lasioglossum (Sudila) bidentatum* (Cameron, 1898)

Source: Wijesekara 2001; *KVK-NMC, KVK-ZMP, IK-ZMP*

New localities: NUE, KNU

17. *Lasioglossum (Sudila) kandiense* (Cockerell, 1913)

Source: Wijesekara 2001; *IK-ZMP*

New localities: SIG

#### 5. *PACHYHALICTUS* Cockerell, 1929

18. *Pachyhalictus bedanus* (Blüthgen, 1926)

Source: Wijesekara 2001

19. *Pachyhalictus kalutarae* (Cockerell, 1911)

Source: Gupta 2003; Wijesekara 2001; *KVK-NMC, KVK-ZMP, IK-ZMP*

New localities: PER, KNU

20. *Pachyhalictus sigiriellus* (Cockerell, 1911)

Source: Gupta 2003; Wijesekara 2001; *KVK-NMC, KVK-ZMP*

21. *Pachyhalictus vinctus* (Walker, 1860)

Source: Wijesekara 2001; *KVK-NMC, KVK-ZMP, IK-ZMP*

New localities: RAN

**6. SPHECODES** Latreille, 1804

22. *Sphcodes biroi* Friese, 1909

Source: *KVK-NMC, IK-ZMP*

New localities: PER

23. *Sphcodes crassicornis* Smith, 1875

Source: *KVK-NMC, IK-ZMP*

New localities: ANU, RAN, ANG, GTL

24. *Sphcodes decorus* (Cameron, 1897)

Source: *KVK-NMC*

**SUBFAMILY - NOMIINAE**

**7. AUSTRONOMIA** Michener, 1965

25. *Austronomia notiomorpha* Hirashima, 1978

Source: Wijesekara 2001; *KVK-NMC, KVK-ZMP, IK-ZMP*

New localities: PER, ANG, RAN, WRP, PUT, SIG, MIP, GTL, KNU

26. *Austronomia krombeini* Hirashima, 1978

Source: Wijesekara 2001; *KVK-NMC, KVK-ZMP, IK-ZMP*

New localities: PER, DAM, HAM, REK, WRP, CHL, PUT, BOM, ANU, MIP,  
KAL

27. *Austronomia* sp. 1 determined by Pauly 2003

Source: *IK-ZMP*

New localities: ANU, PER, DAM, RAN, WRP, CHL, PUT, BAD, RAT, SIG

28. *Austronomia* sp. 2 determined by Pauly 2003

Source: *IK-ZMP*

New localities: PER, RAN, DAM, WRP

**8. *CURVINOMIA* Michener, 1944**

29. *Curvinomia formosa* (Smith, 1858) determined by Pauly 2003

Source: *IK-ZMP*

New localities: PER, RAT, SIG, BOM, BAD

30. *Curvinomia iridiscens* (Smith, 1857) determined by Pauly 2003

Source: *IK-ZMP*

New localities: RAN, PER, CHL, PUT, SIG, KNU

**9. *GNATHONOMIA* Pauly, NEW GENUS [description in appendix]**

31. *Gnathonomia nasicana* (Cockerell, 1911)

Source: *IK-ZMP*

New localities: PER, KNU, ANG, RAN, WRP, CHL, ANU

32. *Gnathonomia* sp. 2

Source: *IK-ZMP*

New localities: PER, WRP, ANU

**10. *HOPLONOMIA* Ashmead, 1904**

33. *Hoplonomia westwoodi* (Gribodo, 1894) based on Bingham, 1897

Source: *IK-ZMP*

New localities: DAM, HAM, ANG, REK, PER, RAT, RAN, KNU, WRP, CHL, PUT,  
MIP

11. *LEUCONOMIA* Pauly, 1980

34. *Leuconomia* sp. determined by Pauly 2003

Source: *IK-ZMP*

New localities: *DAM, USG, HAM, ANG, WRP, CHL, PUT, BOM, ANU, PER, KNU*

12. *LIPOTRICHES* Gerstaecker, 1857

35. *Lipotriches basipicta* (Wickwar, 1908)

Source: Wijesekara 2001

36. *Lipotriches bombayensis* (Cameron, 1908) determined by Pauly 2003

Source: col. K.V. Krombein, Washington

37. *Lipotriches comberi* (Cockerell, 1911) determined by Pauly 2003

Source: *IK-ZMP*

New localities: *ANG, RAT, RAN, WRP, PUT, SIG*

38. *Lipotriches* sp. nr. *comperta* (Cockerell, 1912) determined by Pauly 2003

Source: *IK-ZMP*

New localities: *PER, GTL*

39. *Lipotriches exagens* (Walker, 1860)

Source: Wijesekara 2001; *IK-ZMP*

New localities: *PER, RAT*

40. *Lipotriches fervida* (Smith, 1875) (= *Nomia carinicornis* Cameron, 1902)

Source: BMNH

41. *Lipotriches fulvinerva* (Cameron, 1907) determined by Pauly 2003

Source: *IK-ZMP*

New localities: *HAM, ANG, WRP, PER*

42. *Lipotriches edirisinghei* Pauly n. sp. [description in appendix]

Source: *IK-ZMP*

New localities: PER, SIG, ANG, RAT, WRP, KNU

43. *Lipotriches pulchriventris* (Cameron, 1897) determined by Pauly 2003

Source: *IK-ZMP*

New localities: PER

13. **MACRONOMIA** Cockerell, 1917 (previously unrecorded genus from Sri Lanka, examined by Pauly 2003)

44. *Macronomia rustica* (Westwood, 1875) (= *Nomia rustica* Westwood, 1875)

Source: BMNH

14. **MAYNENOMIA** Pauly, 1984 (previously unrecorded genus from Sri Lanka, determined by Pauly 2003)

45. *Maynenomia* sp. 1

Source: *IK-ZMP*

New localities: PER

46. *Maynenomia* sp. 2

Source: *IK-ZMP*

New localities: WRP

15. **NOMIA** Latreille, 1793

47. *Nomia crassipes* Fabricius, 1798

Source: Wijesekara 2001; *IK-ZMP*

New localities: DAM, HAM, ANG, RAN, PER, KNU, WRP, CHL, PUT, BOM, ANU

16. *PACHYNOMIA* Pauly, 1980 (previously unrecorded genus from Sri Lanka, determined by Pauly 2003)

48. *Pachynomia* sp.

Source: *IK-ZMP*

New localities: HAM, KNU, ANU, PUT

17. *PSEUDAPIS* Kirby, 1900

49. *Pseudapis oxybeloides* (Smith, 1875)

Source: Wijesekara 2001; Gupta 2003; *IK-ZMP*

New localities: DAM, USG, HAM, ANG, WRP, CHL, PUT, BOM, ANU, MIP, PER

18. *STEGANOMUS* Ritsema, 1873

50. *Steganomus nodicornis* Smith, 1875 (= *Nomia matalea* Strand, 1913)

Source: Gupta 2003; Wijesekara 2001; *IK-ZMP*

New localities: RAN, PUT, HAM, REK, CHL

#### SUBFAMILY – NOMIOIDINAE

19. *CEYLALICTUS* Strand, 1913

51. *Ceylalictus appendiculata* (Cameron, 1903) determined by Sakagami, 1984

Collected from Manner, Jaffna as per specimen.

Source: *KVK-NMC, KVK-ZMP*

52. *Ceylalictus horni* (Strand, 1913)

Source: Wijesekara 2001

53. *Ceylalictus cereus* (Nurse, 1901)

Source: Wijesekara 2001; *KVK-NMC, KVK-ZMP, IK-ZMP*

New localities: PER, RAN

54. *Ceylalictus taprobanae* (Cameron, 1897)

Source: Wijesekara 2001; *IK-ZMP*

New localities: KAL, ANG, REK

## **SUBFAMILY – ROPHITINAE**

### **20. *SYSTROPHA* Illiger, 1806**

55. *Systropha tropicalis* Cockerell, 1911

Source: Gupta 2003; Wijesekara 2001; *IK-ZMP*

New localities: PUT, RAN, WRP, ANG, KNU

## **FAMILY – MEGACHILIDAE**

### **Tribe – Anthidiini**

### **21. *ANTHIDIELLUM* Cockerell, 1904**

56. *Anthidiellum butarsis* Griswold, 2001

Source: Krombein and Norden 2001

57. *Anthidiellum krombeini* Griswold, 2001

Source: Krombein and Norden 2001

58. *Anthidiellum ramakrishnae* (Cockerell, 1919)

Source: Wijesekara 2001

**22. EXANTHIDIUM** Pasteels, 1969

59. *Exanthidium rotundiventre* Pasteels, 1987

Source: Pasteels 1987

**23. EUASPIS** Gerstaecker, 1857

60. *Euaspid edentata* Baker, 1995

Source: Gupta 2003; Wijesekara 2001; *KVK-NMC, KVK-ZMP, IK-ZMP*

New localities: MIP, ANU, PUT, GAN, DAM, WRP, KNU, ANG, HAM

**24. PACHYANTHIDIUM** Friese, 1905 (previously unrecorded from Sri Lanka) based on descriptions in Michener 2000

61. *Pachyanthidium* sp. 1

Source: *IK-ZMP*

New localities: WRP, HAM, CHL, PUT

**25. PSEUDOANTHIDIUM** Friese, 1898 (previously unrecorded from Sri Lanka) based on descriptions in Michener 2000

62. *Pseudoanthidium* sp. 1

Source: *IK-ZMP*

New localities: ANU, ANG

**Tribe – Lithurgini**

**26. LITHURGUS** Berthold, 1827

63. *Lithurgus atratus* Smith, 1854

Source: Gupta 2003; Wijesekara 2001; *IK-ZMP*

New localities: WRP, KNU, PUT, CHL, DAM, ANG, PER, HAM, REK, USG

**Tribe - Megachilini**

**27. COELIOXYS** Latreille, 1809

64. *Coelioxys angulata* Smith, 1870

Source: Wijesekara 2001

New localities: *KVK-NMC, KVK-ZMP*

65. *Coelioxys apicata* Smith, 1854

Source: Wijesekara 2001

New localities: *KVK-NMC*

66. *Coelioxys capitata* Smith, 1854

Source: Wijesekara 2001; *KVK-NMC, KVK-ZMP, IK-ZMP*

New localities: PER, ANG, WRP, PUT

67. *Coelioxys confusus* Smith, 1875

Source: Wijesekara 2001; *KVK-NMC, IK-ZMP*

New localities: PER, PUT, BAD

68. *Coelioxys fenestrata* Smith, 1873

Source: Wijesekara 2001

69. *Coelioxys fuscipennis* Smith, 1854

Source: Wijesekara 2001

70. *Coelioxys minutus* Smith, 1879 (previously unrecorded from Sri Lanka)

based on descriptions in Bingham 1897

Source: *IK-ZMP*

New localities: PER, RAN, GAL, ANG, REK, MAT

71. *Coelioxys nitidoscutellaris* Pasteels, 1987

Source: Pasteels 1987

72. *Coelioxys taiwanensis* Cockerell, 1911

Source: Wijesekara 2001; *KVK-NMC*

**28. MEGACHILE Latreille, 1802**

73. *Megachile albolineata* Cameron, 1897

Source: Wijesekara 2001

74. *Megachile amputata* Smith, 1858 (previously unrecorded from Sri Lanka) based on descriptions in Bingham 1897

Source: *IK-ZMP*

New localities: WRP, PER

75. *Megachile ardens* Smith, 1879

Source: Wijesekara 2001; *IK-ZMP*

New localities: ANG

76. *Megachile ceylonica* Bingham, 1896

Source: Wijesekara 2001

77. *Megachile conjuncta* Smith, 1853

Source: Wijesekara 2001; *IK-ZMP*

New localities: RAN, PER

78. *Megachile disjuncta* Fabricius, 1781

Source: Wijesekara 2001; *IK-ZMP*

New localities: MIP, ANU, GAN, DAM, WRP, ANG, GTL, MAT, USG

79. *Megachile hera* Bingham, 1897 (previously unrecorded from Sri Lanka)

based on descriptions in Bingham 1897

Source: *IK-ZMP*

New localities: MIP, ANU, PUT, CHL, RAN, DAM, WRP, KNU, ANG, PER, HAM, BAD

80. *Megachile kandyca* Friese, 1918  
Source: Wijesekara 2001
81. *Megachile lanata* Fabricius, 1793  
Source: Wijesekara 2001; *IK-ZMP*  
New localities: MIP, RAN, PER, DAM, ANG, BAD, GTL, MAT, USG
82. *Megachile mystacea* Fabricius, 1775  
Source: Wijesekara 2001; *IK-ZMP*  
New localities: SIG
83. *Megachile nana* Bingham, 1897 (previously unrecorded from Sri Lanka)  
based on descriptions in Bingham 1897  
Source: *IK-ZMP*  
New localities: PER, DAM, WRP, ANG, REK, GTL, MAT
84. *Megachile nigricans* Cameron, 1898  
Source: Wijesekara 2001
85. *Megachile reepeni* Friese, 1918  
Source: Wijesekara 2001
86. *Megachile relata* Smith, 1879  
Source: Wijesekara 2001
87. *Megachile umbripennis* Smith, 1853  
Source: Wijesekara 2001; *IK-ZMP*  
New localities: SIG, MIP, ANU, PUT, CHL, RAN, PER, DAM, WRP
88. *Megachile vestita* Smith, 1853 (previously unrecorded from Sri Lanka) based on  
descriptions in Bingham 1897  
Source: *IK-ZMP*  
New localities: BOM, CHL, WRP, PER

89. *Megachile vigilans* Smith, 1878

Source: Wijesekara 2001; *IK-ZMP*

New localities: MIP, PUT, CHL, DAM, ANG, PER

**Tribe – Osmiini**

29. *HERIADES* Spinola, 1808

90. *Heriades binghami* Cameron, 1897 determined by D.S. Peters 1983

Source: *KVK-ZMP*, *IK-ZMP*

New localities: RAN, PER, WRP, KNU, ANG, HAM

**FAMILY – APIDAE**

**Tribe - Anthophorini**

30. *AMEGILLA* Friese, 1897

91. *Amegilla (Amegilla) confusa* Smith, 1854 (= *vigilans* Smith, 1878)

Source: Gupta 2003

92. *Amegilla (Amegilla) quadrifasciata* de Villers, 1789

Source: Gupta 2003, Wijesekara 2001

93. *Amegilla (Glossamegilla) violacea* Lepeletier, 1841

Source: Gupta 2003; Wijesekara 2001; *KVK-NMC*, *KVK-ZMP*, *IK-ZMP*

New localities: ANU, PUT, WRP, ANG, BAD, GTL

94. *Amegilla (Micramegilla) mucorea* (Klug, 1845) (= *Anthophora delicata* Cockerell, 1911)  
Source: Gupta 2003
95. *Amegilla (Zebramegilla) fallax* Smith, 1879  
Source: Gupta 2003; Wijesekara 2001; *IK-ZMP*  
New localities: ANU, PUT, DAM, ANG, USG
96. *Amegilla (Zebramegilla) subcoerulea* Lepeletier, 1841  
Source: Gupta 2003; Wijesekara 2001
97. *Amegilla (Zonamegilla) cingulata* Fabricius, 1775  
Source: Gupta 2003; Wijesekara 2001
98. *Amegilla (Zonamegilla) cingulifera* Cockerell, 1910  
Source: Gupta 2003; *KVK-NMC, KVK-ZMP*; Wijesekara 2001
99. *Amegilla (Zonamegilla) comberi* Cockerell, 1911  
Source: Gupta 2003; Wijesekara 2001; *KVK-NMC, KVK-ZMP, IK-ZMP*.  
New localities: ANU, PUT, PER, DAM, WRP, ANG, REK, GTL, KNU, MAT
100. *Amegilla (Zonamegilla) niveocincta* (Smith, 1854) determined by Lieftinck, 1977  
Sources: *KVK-NMC, KVK-ZMP, IK-ZMP*  
New localities: ANG, PER, KNU
101. *Amegilla (Zonamegilla) perasserta* Rayment, 1947 (= *Anthophora perasserata* Rayment, 1947)  
Source: Gupta 2003
102. *Amegilla (Zonamegilla) puttalama* Strand, 1913  
Source: Gupta 2003; Wijesekara 2001; *KVK-NMC, KVK-ZMP, IK-ZMP*  
New localities: PER, DAM, ANG, KNU, MAT, GTL, BAD

103. *Amegilla (Zonamegilla) subinsularis* (Strand): Cockerell, 1919

[Brooks (1988: 573) states 'listed by Cockerell, 1919, as *insularis* subsp. but original description is not found']

Source: Gupta 2003; Wijesekara 2001; *KVK-NMC, KVK-ZMP, IK-ZMP*

New localities: SIG, PER, KNU

104. *Amegilla (Zonamegilla) zonata* Linnaeus, 1758

Source: Gupta 2003; Wijesekara 2001

105. *Amegilla* sp. [manuscript name *scintillans* of Lieftinck, 1977]

Source: *KVK-NMC, KVK-ZMP, IK-ZMP*

New localities: BOM, MIP, PUT, WRP, KNU, ANG, PER, BAD, NUE

### Tribe - Allodapini

#### 31. *BRAUNSAPIS* Michener, 1969

106. *Braunsapis cupulifera* Vachal, 1894 (= *Allodape cupulifera bakeri* Cockerell, 1916)

(previously unrecorded from Sri Lanka) based on

Description in Bingham 1897

Source: *IK-ZMP*

New localities: PER

107. *Braunsapis flaviventris* Reyes, 1991

Source: Gupta 2003; Wijesekara 2001

108. *Braunsapis mixta* Smith, 1852 (= *Allodape mixta* Meade-Waldo, 1923)

Source: Gupta 2003; Wijesekara 2001; *IK-ZMP*

New localities: ANU, RAN, PER, WRP, KNU, ANG

109. *Braunsapis picitarsis* Cameron, 1902

Source: Gupta 2003; Wijesekara 2001

**Tribe – Ceratinini**

**32. CERATINA Latreille, 1802**

*110. Ceratina (Ceratinidia) hieroglyphica* Smith, 1854

Source: Gupta 2003; Wijesekara 2001; *IK-ZMP*

New localities: ANU, ANG, MIP, GTL, BAD, BAN, HAM, REK, USG, BOM, KAL, GAM, PER, RAN, MAT, GAL, DAM, KNU, NUE, STE, PUT, CHL, WAR, RAT, SIG, VAV

*111. Ceratina (Pithitis) binghami* Cockerell, 1910 (= *C. viridissima* Dalla Torre, 1896)

Source: Gupta 2003; Wijesekara 2001; *IK-ZMP*

New localities: ANU, ANG, MIP, GTL, BAD, HAM, REK, USG, BOM, KAL, GAM, PER, RAN, MAT, GAL, DAM, KNU, PUT, CHL, WAR, RAT, SIG, VAV

*112. Ceratina (Pithitis) smaragdula* Fabricius, 1787 (= *C. sexmaculata*

Smith, 1879 = *Pithitis smaragdula* Hirashima, 1969)

Source: Wijesekara 2001; *IK-ZMP*

New localities: MIP, DAM, KNU

*113. Ceratina (Simoceratina) tanganyicensis* Strand, 1911 determined by M. Terzo  
(Previously unrecorded from Sri Lanka)

Source: *IK-ZMP*

New localities: WRP, KNU

*114. Ceratina (Xanthoceratina) beata* Cameron, 1897

Source: Gupta 2003; Wijesekara 2001

*115. Ceratina (Xanthoceratina) picta* Smith, 1854

Source: Gupta 2003; Wijesekara 2001

**Tribe – Nomadini**

**33. *NOMADA* Scopoli, 1770**

*116. Nomada adusta* Smith, 1875

Source: Gupta 2003; Wijesekara 2001

*117. Nomada antennata* Meade-Waldo, 1913

Source: Gupta 2003; *KVK-ZMP, KVK-ZMP*; Wijesekara 2001

*118. Nomada bicellularis* Schwarz, 1990

Source: Wijesekara 2001; *KVK-NMC*

*119. Nomada ceylonica* Cameron, 1897

Source: Gupta 2003; Wijesekara 2001

*120. Nomada lusca* Smith, 1875

Source: Gupta 2003; Wijesekara 2001

*121. Nomada priscilla* Nurse, 1902

Source: Gupta 2003; Wijesekara 2001; *KVK-NMC, KVK-ZMP, IK-ZMP*

New localities: NUE, KNU

*122. Nomada wickwari* Meade-Waldo, 1913

Source: Gupta 2003; Wijesekara 2001; *KVK-NMC, KVK-ZMP, IK-ZMP*

New localities: ANG

**Tribe - Eucerini**

**34. TETRALONIA Spinola, 1839**

123. *Tetralonia commixtana* Strand, 1913

Source: Gupta 2003; Wijesekara 2001

124. *Tetralonia taprobanicola* Strand, 1913

Source: Gupta 2003; Wijesekara 2001

125. *Tetralonia fumida* Cockerell, 1911

Source: Gupta 2003; Wijesekara 2001

**Tribe – Melectini**

**35. THYREUS Panzer, 1806**

126. *Thyreus ceylonicus* Friese, 1905 (= *Crocisa ceylonica* Friese, 1905)

Source: Gupta 2003; Wijesekara 2001; *KVK-NMC, KVK-ZMP, IK-ZMP*

New localities: WRP, KNU, ANG, PER, REK, USG, GTL

127. *Thyreus histrio* Fabricius, 1775 (= *Crocisa histrio* Strand, 1913)

Source: Gupta 2003; Wijesekara 2001; *KVK-NMC, KVK-ZMP, IK-ZMP*

New localities: ANU, PUT, PER, DAM, WRP, KNU, ANG, REK

128. *Thyreus insignis* Meyer, 1912 (= *Crocisa insignis* Meyer, 1912)

Source: Gupta 2003; Wijesekara 2001; *KVK-NMC, KVK-ZMP, IK-ZMP*

New localities: SIG, KNU

129. *Thyreus ramosellus* Cockerell, 1919 (= *Crocisa ramosellus* Cockerell, 1919)

Source: Gupta 2003; Wijesekara 2001; *KVK-NMC, KVK-ZMP, IK-ZMP*

New localities: PER, ANU, REK, ANG

130. *Thyreus surniculus* Lieftinck, 1959

Source: Gupta 2003; Wijesekara 2001 *VK-NMC, KVK-ZMP, IK-ZMP*

New localities: ANG, GTL, BAD

131. *Thyreus takaonis* Cockerell, 1911

Source: Gupta 2003; Wijesekara 2001; *KVK-NMC, KVK-ZMP, IK-ZMP*

New localities: PUT, CHL, PER, DAM, WRP, ANG, BAD, KNU

### Tribe – Xylocopini

#### 36. *XYLOCOPA* Latreille, 1802

132. *Xylocopa aestuans* Lepeletier, 1841

Source: Gupta 2003; Wijesekara 2001

133. *Xylocopa amethystina* Fabricius, 1793 (*X. amethystina sigiriana* Cockerell, 1911)

Source: Gupta 2003; Wijesekara 2001; *KVK-NMC, KVK-ZMP, IK-ZMP*

New localities: ANU, RAN, WRP, BAD, GTL

134. *Xylocopa auripennis* Lepeletier, 1841

Source: Gupta 2003; Wijesekara 2001; *IK-ZMP*

New localities: RAN

135. *Xylocopa bryorum* (Fabricius, 1775)

Source: Gupta 2003; Wijesekara 2001; *IK-ZMP*

New localities: HAM

136. *Xylocopa coerulea* (Fabricius, 1804)

Source: Gupta 2003

137. *Xylocopa dejeanii* Lepeletier, 1841

Source: Wijesekara 2001; *KVK-NMC, KVK-ZMP*

138. *Xylocopa fenestrata* (Fabricius, 1798)

Source: Gupta 2003; Wijesekara 2001; *KVK-NMC, KVK-ZMP, IK-ZMP*

New localities: MIP, PUT, CHL, NUE, PER, DAM, WRP, ANG, MAT, GTL

139. *Xylocopa nasalis* Westwood, 1842

Source: Gupta 2003; Wijesekara 2001; *IK-ZMP*

New localities: GTL

140. *Xylocopa nigrocaerulea* Smith, 1874

Source: Wijesekara 2001

141. *Xylocopa ruficornis* Fabricius, 1804

Source: Gupta 2003; Wijesekara 2001; *KVK-NMC, KVK-ZMP, IK-ZMP*

New localities: RAN, KNU, ANG, REK, MAT

142. *Xylocopa tenuiscapa* Westwood, 1840

Source: Gupta 2003; Wijesekara 2001; *KVK-NMC, KVK-ZMP, IK-ZMP*

New localities: SIG, ANU, PUT, RAN, NUE, PER, DAM, WRP, KNU, BAD,  
GTL, MAT

143. *Xylocopa tranquibarica* (Fabricius, 1804)

Source: Gupta 2003; Wijesekara 2001; *KVK-NMC, IK-ZMP*

New localities: GTL

**Tribe – Apini**

**37. APIS Linnaeus, 1758**

*144. Apis cerana* Fabricius, 1793

Source: Gupta 2003; Wijesekara 2001; *KVK-NMC, KVK-ZMP, IK-ZMP*

New localities: ANU, ANG, MIP, GTL, BAD, BAN, HAM, REK, USG, BOM, KAL, GAM, PER, RAN, MAT, GAL, DAM, KNU, NUE, STE, PUT, CHL, WAR, RAT, SIG, VAV

*145. Apis dorsata* Fabricius, 1793

Source: Gupta 2003; Wijesekara 2001; *KVK-NMC, KVK-ZMP, IK-ZMP*

New localities: ANU, ANG, MIP, GTL, BAD, BAN, HAM, REK, USG, BOM, KAL, GAM, PER, RAN, MAT, GAL, DAM, KNU, NUE, STE, PUT, CHL, WAR, RAT, SIG, VAV

*146. Apis florea* Fabricius, 1787

Source: Gupta 2003; Wijesekara 2001; *KVK-NMC, KVK-ZMP, IK-ZMP*

New localities: ANU, ANG, MIP, GTL, BAD, BAN, HAM, REK, USG, BOM, KAL, GAM, PER, RAN, MAT, GAL, DAM, KNU, PUT, CHL, WAR, RAT, SIG, VAV

**Tribe – Meliponini**

**38. TRIGONA Jurine, 1807**

*147. Trigona iridipennis* Smith, 1854

Source: Gupta 2003; Wijesekara 2001; *KVK-NMC, KVK-ZMP, IK-ZMP*

New localities: ANU, ANG, MIP, GTL, BAD, BAN, HAM, REK, USG, BOM, KAL, GAM, PER, RAN, MAT, GAL, DAM, KNU, NUE, STE, PUT, CHL, WAR, RAT, SIG, VAV

148. *Trigona sp.* (previously unrecorded from Sri Lanka)

Source: *IK-ZMP*

New localities: KNU

## Appendix

### Description of the new species

#### *Lipotriches edirisinghei* Pauly n.sp.

##### **Holotype male:**

SRI LANKA : Arakawida, 55 km NE Colombo, 1.iii.1971 (J & M. Sedlacek; Bishop Museum).

##### **Paratypes:**

SRI LANKA: Kandy District, University Pond, 20.v.2001, 1 male (I. Karunaratne & S. Chandra). – Kandy district, Peradeniya University Park, 15.iv.2001, 1 female (I. Karunaratne & S. Chandra). Kandy District, Peradeniya University Park, 3-7.ii.2003, 4 females (I. Karunaratne & N. Ratnayake). - Kandy District, Peradeniya University Park, 3-7.ii.2003, 1 male (I. Karunaratne & N. Ratnayake). Kandy District, Peradeniya University Park, 8.ii.2002, 1 female (I. Karunaratne & S. Chandra.). Kandy District, Peradeniya University Park, 16.v.2001, 2 males (I. Karunaratne & S. Chandra.). Kandy District, Peradeniya University Park, 6.iv.2001, 3 females (I. Karunaratne & S. Chandra.). Kandy District, Peradeniya Botanical Gardens, 14.iii.2001, 1 female (I. Karunaratne & S. Chandra.). Kandy District, Peradeniya University Park, 16.iv.2001, 4 females (I. Karunaratne & S. Chandra.). Kandy District, Peradeniya University Park, 20.iii.2001, 3 females (I. Karunaratne & S. Chandra.). Kandy District, Peradeniya Botanical Gardens, 18.viii.2003, 1 female (I. Karunaratne & N. Ratnayake). Kandy District, Peradeniya Botanical Gardens, 25.ii.2003, 1 female (I. Karunaratne & N. Ratnayake). Kandy District, Peradeniya Botanical Gardens, 25.ii.2003, 1 male (I. Karunaratne & N. Ratnayake). Kandy District, Peradeniya Botanical Gardens, 28.iv.2003, 1 male (I. Karunaratne & N. Ratnayake). Kandy District, Peradeniya Botanical Gardens, 21.iii.2003, 1 male (I.

Karunaratne & N. Ratnayake). Hambanthota District, Angunakolapelessa, 16-19.i.2002, 3 females (I. Karunaratne & S. Chandra.). Hambanthota District, Angunakolapelessa, 4.iv.2001, 1 male (I. Karunaratne & S. Chandra.). Ratnapura District, Ratnapura, 21.xii.2002, 1 female (I. Karunaratne & S. Chandra.). Ratnapura District, Sinharaja, 9-10.iv.2003, 12 females (I. Karunaratne & N. Ratnayake). Ratnapura District, Sinharaja, 9-10.iv.2003, 3 males (I. Karunaratne & N. Ratnayake). Kurunegala District, Gonagama, 27.i.2002, 1 female (I. Karunaratne & S. Chandra.). Kurunegala District, Gonagama, 1.ii.2002, 2 females (I. Karunaratne & S. Chandra.). Matale District, Knuckles (Panawellawadiya), 12.xii.2003, 4 females (I. Karunaratne & N. Ratnayake). Polonnaruwa District, Giritale, 25.v.2003, 1 female (D.D. Jayathilake).

(All paratypes listed above are in the collection of the Zoology Museum of the Department of Zoology, University of Peradeniya, Sri Lanka).

**Description:**

6 mm long. Male close to *Lipotriches pulchriventris* (Cameron, 1897) but differing by the sternite 4 not depressed, with plumose setae only on posterior margin. Long setae of sternite 5 white (black in *L. pulchriventris*).

---

**Paratypes:** 1 male & 2 female specimens are deposited in the Insect collection of the National Museums, Colombo, Sri Lanka.

---



Figure 1: *Lipotriches edirisinghei*- female head

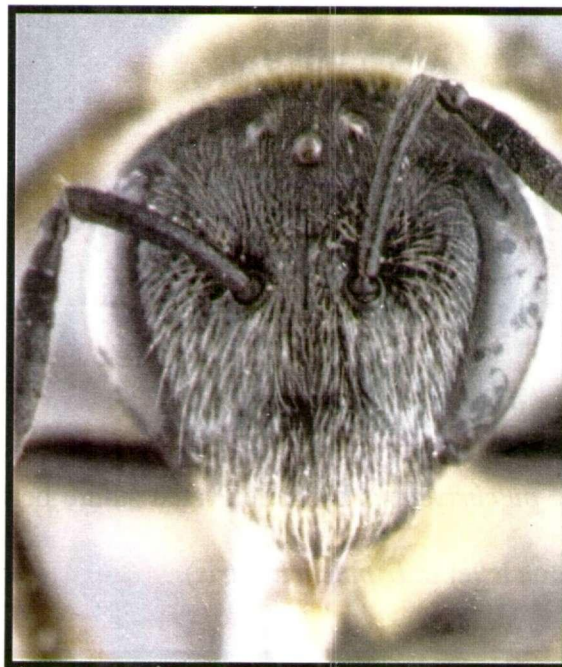


Figure 2: *Lipotriches pulchriventris* - female head

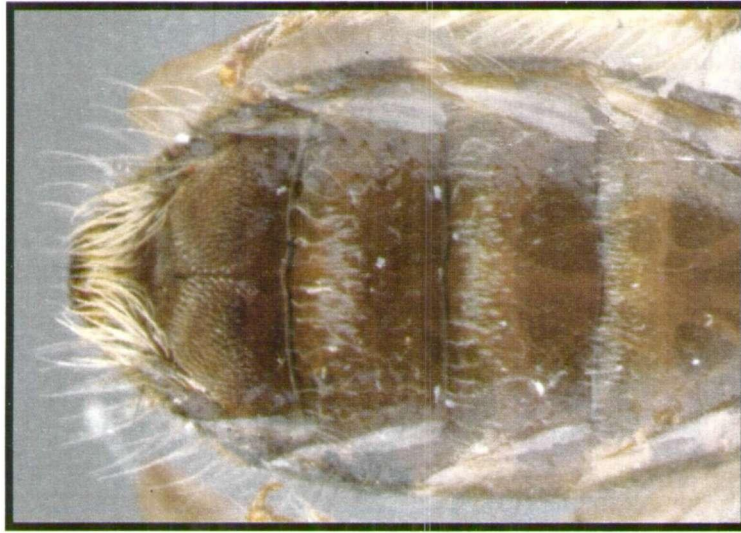


Figure 3: *Lipotriches edirisinghei* – Male abdomen – ventral view

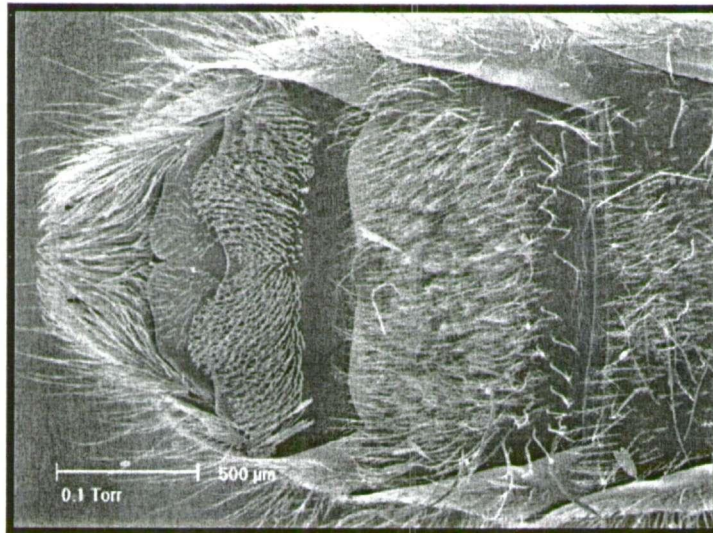


Figure 4 : *Lipotriches pulchriventris* – Male abdomen – ventral view

## Description of new genus

*Gnathonomia* Pauly, new genus

This is a manuscript name of late D.B. Baker, without published description.

**Description:** A genus of moderate-sized species (7-12mm), with coloured tergal bands.

**Females:** basitibial plate completely margined by carinae; middle tibial spur finely toothed to the apex. Male with large mandible each with a median tooth on the upper margin (this character is not found in all other banded Nomiine genera).

**Type-species:** *Nomia nasicana* Cockerell, 1911.

Included species: *Nomia albofasciata* Smith, 1875; *Nomia dorsalis* Smith, 1853; *Nomia excellens* Cockerell, 1931; *Nomia thoracica* Smith, 1875.



Figure 5: *Gnathonomia thoracica* – male head – side view



Figure 6: *Gnathonomia thoracica* – male head – anterior view

## INDEX TO GENERA OF APIFORMES

	Page. No.		Page. No
<i>Amegilla</i>	14	<i>Lipotriches</i>	06
<i>Anthidiellum</i>	09	<i>Lithurgus</i>	10
<i>Apis</i>	22	<i>Macronomia</i>	07
<i>Austronomia</i>	04	<i>Maynenomia</i>	07
<i>Braunsapis</i>	16	<i>Megachile</i>	12
<i>Ceratina</i>	17	<i>Nomada</i>	18
<i>Ceylalictus</i>	08	<i>Nomia</i>	07
<i>Coelioxys</i>	11	<i>Pachyanthidium</i>	10
<i>Curvinomia</i>	05	<i>Pachynomia</i>	08
<i>Euaspis</i>	10	<i>Pachyhalictus</i>	03
<i>Exanthidium</i>	10	<i>Pseudapis</i>	08
<i>Gnathonomia</i>	05	<i>Pseudoanthidium</i>	10
<i>Halictus</i>	01	<i>Sphecodes</i>	04
<i>Heriades</i>	14	<i>Steganomus</i>	08
<i>Homalictus</i>	01	<i>Systropha</i>	09
<i>Hoplonomia</i>	05	<i>Tetralonia</i>	19
<i>Hylaeus</i>	01	<i>Thyreus</i>	19
<i>Lasioglossum</i>	02	<i>Trigona</i>	22
<i>Leuconomia</i>	06	<i>Xylocopa</i>	20

## ACKNOWLEDGEMENTS

The authors gratefully acknowledge Drs. S.W.T. Batra (formerly of the USDA, Beltsville), B.B. Norden (formerly of the Smithsonian Institution, Washington) for initiating and encouraging bee research in Sri Lanka and Dr Michel Terzo (FRNS Scientific Researcher, University of Mons-Hainaut, Belgium) for identifying the *Ceratina* species. It was possible, through the courtesy of Dr T. Gonsalves, to examine the oriental material in the Bishop Museum (Honolulu, Hawaii), including the holotype of *Lipotriches edirisinghei*. The Director General, Department of Wildlife Conservation and the Conservator General of Forest Department are acknowledged for granting permission to collect bees from field sites coming under their purview and for issuing permits to send bee specimens abroad for identification. Field assistance provided by Mr C.M.B.S. Chandrasekara and Mr R.M.N. Ratnayake is gratefully appreciated. The study was funded by a research grant from the National Science Foundation (NSF) of Sri Lanka awarded to the second author.

## REFERENCES

- Bingham, C. T. (1897) *The Fauna of British India including Ceylon and Burma, Hymenoptera Vol. 1, Wasps and Bees*. Taylor and Francis. London.;568.
- Gupta, R. K. (2003) *An annotated catalogue of bees of the Indian Region*, online <http://geocities.com/BeesInd2/braunsapis.htm>
- Karunaratne, W. A. I. P. (2004) *Taxonomy and Natural History of Bees in Selected Areas of Sri Lanka*. Ph.D. Thesis (unpublished ). PGIS, University of Peradeniya, Sri Lanka.
- Krombein, K. V. & Norden, B. B. (2001) Notes on trap-nesting Sri Lankan wasps and bees (Hymenoptera: Vespidae, Pompilidae, Sphecidae, Colletidae, Megachilidae), *Proceedings of the Entomological Society*, Washington, 103(2): 274-281.
- Michener, C. D. (2000) *The Bees of the World*, pp 913. Baltimore, Maryland, USA: Johns Hopkin University Press.
- Pasteels, J. J. (1987) Megachilidae (Hymenoptera, Apoidea) recoltés par le Dr. K. V. Krombein et son équipe au Sri Lanka. *Bulletin et Annales de la Société royale belge d'Entomologie*, 123: 225-235.
- Snelling, R. R. (1980) New bees of the Genus *Hylaeus* from Sri Lanka and India (Hymenoptera: Colletidae). *Contributions in Science*, Natural History Museum of Los Angeles County, 328: 1-18.
- Wijsekara, A. (2001) An annotated list of bees (Hymenoptera: Apoidea: Apiformes) of Sri Lanka, *Tijdschrift voor Entomologie* , 144: 145-158.