

Through a giant translucent wheel Archt. Anusha Rajapaksha of **RUPAROO** opens up a new trend for spare parts shopping in Colombo at

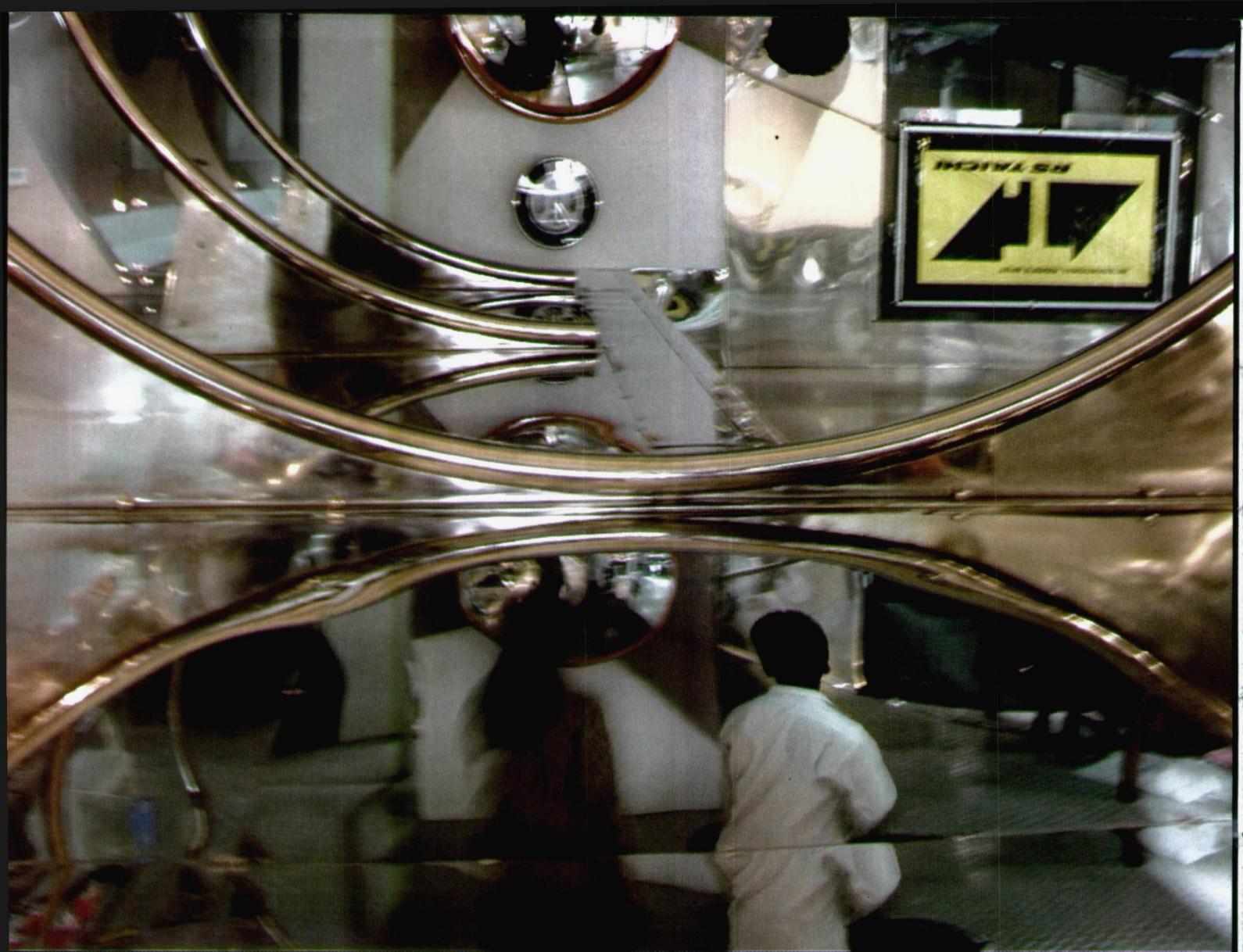
M O T O W O R L D

Usually motor spare parts shops are a clutter - location-wise as well as display-wise. However, down Maradana Road is located "The Moto World" - another type of spare parts shop for motorcycles, owned by a veteran in the business.

The shop is located on the ground floor of a building that is 112 feet long and 20 feet wide. The height of the space is 8 feet.

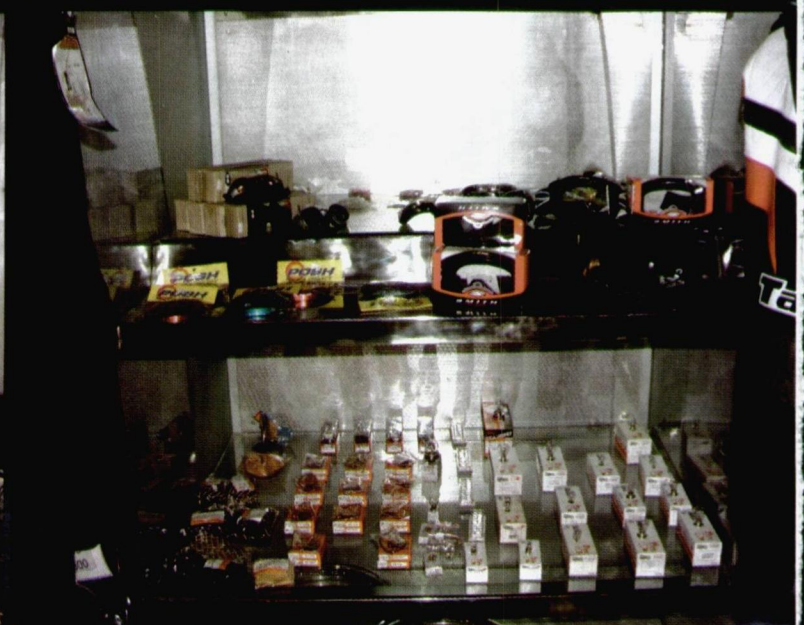
The contributory factors to the Architect's inspiration were the dimensions of the tunnel like space and a photograph in a spare parts manual of a metallic rim against an uneven granite block - the smoothness and firmness against roughness and unevenness.





The ultimate concept that emerged was to take the customer through a series of rings - RIMS out of stainless steel tube with the counters and the shelves to store goods to be on either side. The glass shelves are held by the rims. In between a group of rims are 1-foot high podiums layered with molten glass, which appear like crystals. Majestically displayed here is a certain brand of motorcycle.

The floor is out of checkered plate. Mirror finish stainless steel sheets and perforated aluminum sheets cover the walls and the ceiling. The shelves are out of glass. The finishes contribute towards creating the correct atmosphere within.





The circular tunnel pours out from the entrance with polycarbonate sheets and stainless steel tubes, increasing in diameter towards the entrance. Two trapezoid planes on H irons at a height of 30 feet cover and define the entrance and entrance tube. The most important thing is the distortion of the stereotype look of the existing three-storied building. It is continued to eternity by the convex mirror fixed to the rear wall, which carries the tunnel effect to eternity. ▲

