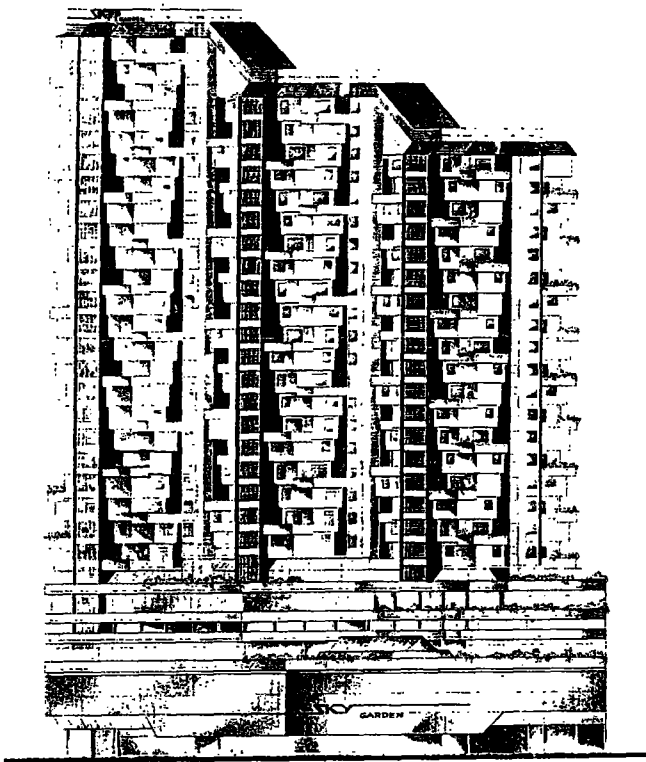


AN ENVIRONMENTALLY FRIENDLY HIGH-RISE APARTMENT BLOCK

CDP. Project submitted for MSc in State Technical
University of Vladimir. RUSSIA in 1996

МНОГОЭТАЖНЫЙ ЖИЛОЙ КОМПЛЕКС НА



ГЛАВНЫЙ ФАСАД М. 1:200 (Здк с запада)

In considering an architecture in harmony with climate and nature or ecologically sustainable it is important to understand the possibility of a mutual relationship between technology and sustainable development.

A building is not only a beautiful object in a plot of land, but exists as a dependent of that surrounding while contributing to that environment.

In the Sri-Lankan context, it is observed that increased building activities have caused the mass production of stereotyped climatically not responsive high-rise apartments.

The author of this student exercise demonstrates that appropriately devised and functionally articulated with cantilevered floors, one over the other, can create optimum comfort spaces inside a high-rise apartment building.

The most striking feature of this complex is the designing of terrace in such a configuration that each is provided with sufficient ventilation, sunlight and panorama to give the feeling of a small outdoor garden. The author of this design maintains that this sort of Gardens in sky will influence the people to accept living on upper floors.

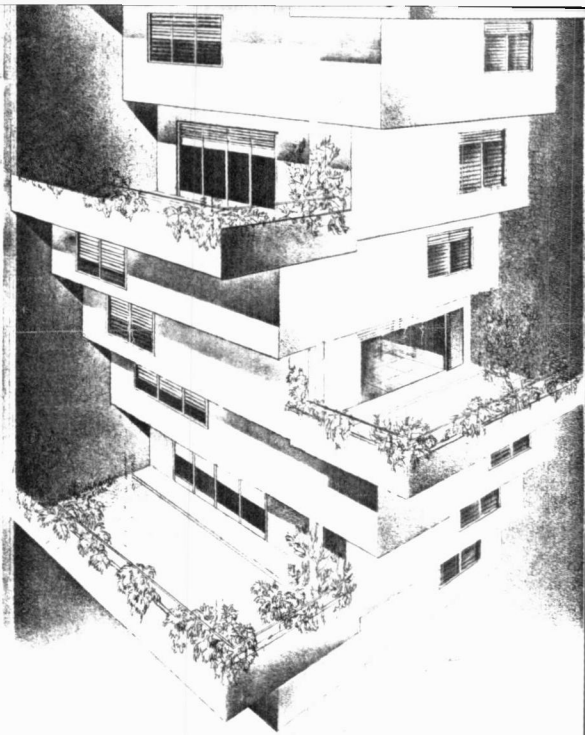
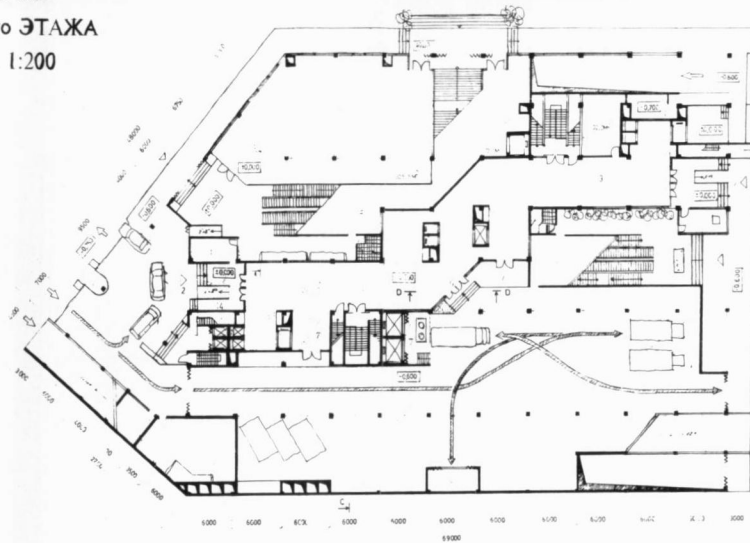
The other interesting feature in this project is it's water supply system without a large scale centralised water tank rising up to the sky or without continuous pumping. The proposed system of water supply also feed the fire fighting outlets in addition to normal domestic supply.

The complex has 24 types of luxury units that would suit people with different requirements and also this diversity of units excludes the monotony that prevails in conventional housing schemes. The composition of units ranges from 2 bedrooms to 4 bedrooms, with or without the office room and the garden.



ПАНОРАМА ЗАСТРОЙКИ

ПЛАН
I-го ЭТАЖА
М. 1:200



ФРАГМЕНТ ФАСАДА ЖИЛОЙ ЧАСТИ

Among the unique features in this building complex the expansion if the neighbourhood along with great degree of privacy is to be appreciated.

This has been achieved by joining the 3 towers at each floor level. Along this facility provides an easy way of evacuating people in an emergency situation.

On the whole this building complex poses a good example of utilising the valuable space and promotion of the concept of vegetation in an ever congesting city.

Multi-storied living Complex consists of 122 Dwelling units in Colombo, Sri Lanka

The Complex consists of three high rising towers (23, 20, 18 floors) on a Platform which has seven floors. Three towers form the living part of the complex, while seven storied base serves as the block of public services. Dwelling units are designed with 4 x 7 m terraces and mobile partitioned walls.

The whole building Complex includes 122 dwelling units and group of public centres as follows.

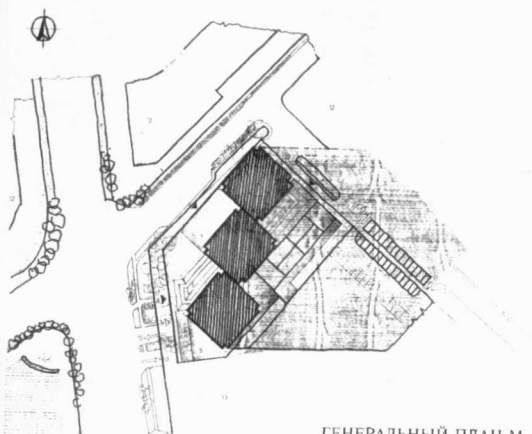
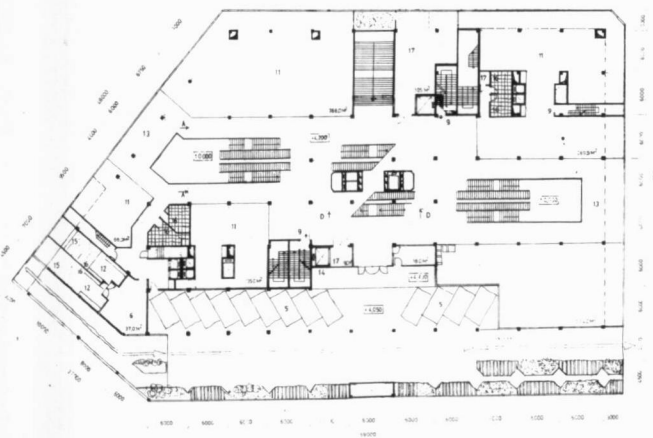
1. Supermarket Complex on 1st, 2nd and 3rd floors (3538 sqm in area)
2. Cafe – Restaurant on the 4th floor with different service areas (565 persons)
3. Sports club and Gymnasium with an outdoor tennis court on the 6th floor (for 100 persons)
4. Office area on several floors (670 sqm)
5. Pre-school – Day care centre on the 7th floor (35 kids)
6. Car parks for dwellers on the 1st and 2nd levels of the basements (for 124 vehicles)
7. Car parks for customers of the supermarket are on the ground level and the 1st floor
8. Stores for the supermarket are on 3rd lowest level of the basement.

Regarding the Author,

Mr. P. Premaratne received his MSc in Architecture from the State Technical University of Vladimir, Russia in 1996. His thesis became the best of the batch and has been recommended for building up. Presently he is preparing for his PhD in Russia.

ПЛАН 2-го ЭТАЖА М. 1:200

УНИВЕРСАЛЬНЫЙ МАГАЗИН



ГЕНЕРАЛЬНЫЙ ПЛАН М. 1:500